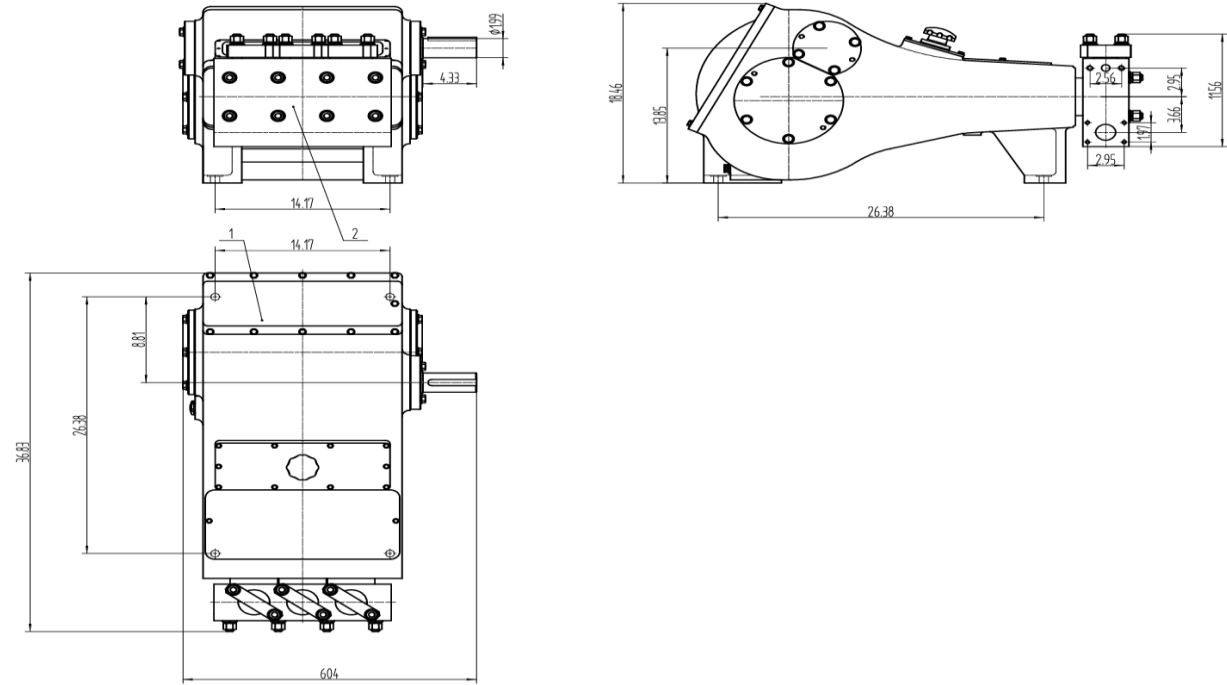


Reciprocating Plunger Pumps TRIPLEX AT-75 (2.83~106.82 GPM)

Technical specification data	
Maximum input horsepower rating	66.15
Pump speed	469
Stroke length	2.95"
Maximum plunger size	2.75"
Fluid end working pressure rating	19,880 Psi
Discharge connection size	≤ 2"
Suction connection size	≤ 3.25"
Crankcase oil capacity	4.54 Gallons
Standard gear ratio	3.75: 1
Optional gear ratio	3.15789: 1
Pump weight complete (Less skid)	926 Lbs
Overall dimensions (L x W x H)	36.81" X 23.46" X 18.46"



Features

- Deliver high pressure with minimal energy* consumption.
 - Designed to handle extreme pressures while maintaining stable flow rates.
 - Flexible design options to meet various application requirements.
 - Compact pump package designs allow for easy installation in limited spaces.
- Pumps can be configured to handle harsh or abrasive media like saline water, chemical fluids, or radioactive liquids with appropriate material selection.
- Engineered for quiet operation.

AT-75 2.95" Stroke Triplex		Strokes Per Min.	261	310	395	469
		Input HP*	36.81	43.72	57.71	66.15
Plunger Size	Nominal Pressure (PSI)	Output Gal/Rev	Output – Gallons Per Minute**			
2.75"	946.37	0.228	59.45	70.61	89.97	106.82
2.50"	1,145.10	0.188	49.13	58.35	74.35	88.28
2.25"	1,413.71	0.152	39.80	47.27	60.23	71.51
2.00"	1,789.22	0.120	31.44	37.35	47.59	56.50
1.75"	2,336.95	0.092	24.07	28.59	36.43	43.26
1.50"	3,180.84	0.068	17.69	21.01	26.77	31.78
1.25"	4,580.41	0.047	12.28	14.59	18.59	22.07
1.00"	7,156.90	0.030	7.86	9.34	11.90	14.13
0.75"	12,723.37	0.017	4.42	5.25	6.69	7.95
0.60"	19,880.27	0.011	2.83	3.36	4.28	5.09

*Based on 87.4% mechanical efficiency, **Based on 100% volumetric efficiency.